

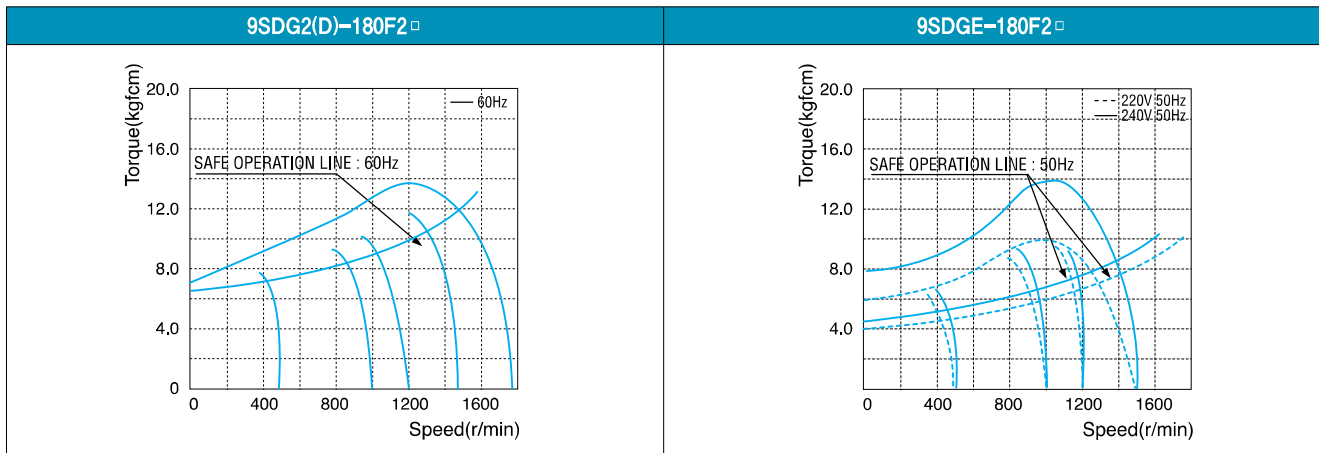
180W Speed Control Induction Motor 180W(□ 90mm)

Motor 사양

Model		Output W	Voltage V	Frequency Hz	Poles	Duty	Speed Range r/min	Starting Torque		Permissible Torque				Capacitor μF / VAC
Connector Type	Lead Wire Type							kgfcm	N.m	1200r/min	90r/min	kgfcm	N.m	
9SDG*~180F2□~C(L): Gear Type Shaft 9SDD*~180F2~C(L): D-Cut Type Shaft 9SDK*~180F2~C(L): Key Type Shaft														
9SD□1(A)-180F2□~C	9SD□1(A)-180F2□~L	180	1φ 110	60	4	Cont.	90-1700	6.40	0.640	10.00	1.000	3.00	0.300	30.0 / 250
9SD□2(D)-180F2□~C	9SD□2(D)-180F2□~L	180	1φ 220	60	4	Cont.	90-1700	6.40	0.640	10.00	1.000	3.00	0.300	8.0 / 400
9SD□E-180F2□~C	9SD□E-180F2□~L	180	1φ 220	50	4	Cont.	90-1400	6.40	0.640	10.00	1.000	3.00	0.300	8.0 / 400
			90-1700				7.00	0.700	11.00	1.100	3.30	0.330		

- 1) 모터 모델명 * 자리에는 전압코드가 들어갑니다. 2) 모터 모델명 □ 자리에는 모터 출력축 타입명이 들어갑니다.
 (G: Gear Type / D: D-Cut Type / K: Key Type) Gear Type Shaft는 감속기 부착용이며 D-Cut 및 Key Type Shaft는 모터 단독 사용 시의 출력축입니다.
 3) 모터 출력축 타입이 Gear Type일 경우, □ 안에는 부착되는 감속기의 모델 타입명이 들어갑니다. 4) 전압코드 A, D, E는 TP(Thermal Protector) 부착 사양입니다.

회전속도-토크 특성



감속기 부착 시 최대허용토크

Motor Model	Gear box Model	회전 속도 r/min	전압 V	주파 수 Hz	감속 비	3	3.6	5	6	7.5	9	10	12.5	15	18	20	25	30	36	40	50	60	75	90	100	120	150	180	200			
9SDG*~180F2H	9HBK □ BH	1200	110	60	kgfcm	24.3	29.2	40.5	48.6	60.8	72.9	81.0	91.3	109.5	131.4	146.0	165.0	198.0	237.6	264.0	300.0	300.0	300.0	300.0	300.0	300.0	300.0	300.0	300.0	300.0		
					N.m	2.38	2.86	3.97	4.76	5.95	7.14	7.94	8.94	10.73	12.88	14.31	16.17	19.40	23.28	25.87	29.40	29.40	29.40	29.40	29.40	29.40	29.40	29.40	29.40	29.40	29.40	29.40
		220/240	50	kgfcm	24.3	29.2	40.5	48.6	60.8	72.9	81.0	91.3	109.5	131.4	146.0	165.0	198.0	237.6	264.0	300.0	300.0	300.0	300.0	300.0	300.0	300.0	300.0	300.0	300.0	300.0	300.0	300.0
				N.m	2.38	2.86	3.97	4.76	5.95	7.14	7.94	8.94	10.73	12.88	14.31	16.17	19.40	23.28	25.87	29.40	29.40	29.40	29.40	29.40	29.40	29.40	29.40	29.40	29.40	29.40	29.40	29.40
		9HFK □ BH	90	110	60	kgfcm	7.3	8.7	12.2	14.6	18.2	21.9	24.3	27.4	32.9	39.4	43.8	49.5	59.4	71.3	79.2	99.0	118.8	132.8	159.3	177.0	212.4	265.5	300.0	300.0	300.0	300.0
						N.m	0.71	0.86	1.19	1.43	1.79	2.14	2.38	2.68	3.22	3.86	4.29	4.85	5.82	6.99	7.76	9.70	11.64	13.01	15.61	17.35	20.82	26.02	29.40	29.40	29.40	29.40
	220/240		50	kgfcm	7.3	8.7	12.2	14.6	18.2	21.9	24.3	27.4	32.9	39.4	43.8	49.5	59.4	71.3	79.2	99.0	118.8	132.8	159.3	177.0	212.4	265.5	300.0	300.0	300.0	300.0	300.0	300.0
				N.m	0.71	0.86	1.19	1.43	1.79	2.14	2.38	2.68	3.22	3.86	4.29	4.85	5.82	6.99	7.76	9.70	11.64	13.01	15.61	17.35	20.82	26.02	29.40	29.40	29.40	29.40		

- 1) 모터 모델명 * 자리에는 전압코드가 들어갑니다.
 2) 감속기 모델명 □ 안에는 감속비, ◇ 안에는 출력축 재질이 들어갑니다.
 3) 위의 표에서 색칠된 범위의 감속비를 선택했을 때 감속기의 출력축은 모터의 출력축과 같은 방향으로 회전합니다.
 흰색 바탕 범위의 감속비에서는 감속기 출력축은 모터 출력축의 회전방향과 반대방향으로 회전합니다.

S.C. Induction Motor 180W (□90mm)

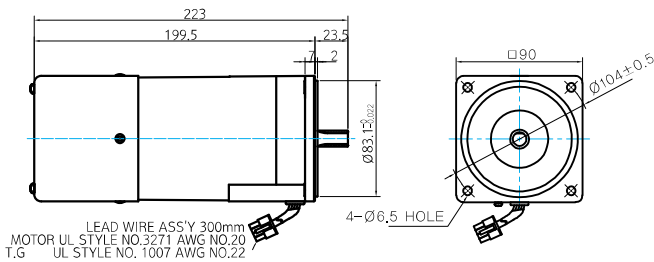
Motor Model	Gearbox Model	회전속도 r/min	전압 V	주파수 Hz	감속비	5	7.5	10	15	20	25	30	40	50	60	80	100	
9SDG* -180F2WH	9WHD □ -030	1200	110	60	kgfcm N.m	34.8 3.41	50.4 4.94	64.8 6.35	91.2 8.94	115.2 11.29	132.0 12.94	153.6 15.05	183.7 18.00	173.5 17.00	163.3 16.00	132.7 13.00	-	
			220	60	kgfcm N.m	34.8 3.41	50.4 4.94	64.8 6.35	91.2 8.94	115.2 11.29	132.0 12.94	153.6 15.05	183.7 18.00	173.5 17.00	163.3 16.00	132.7 13.00	-	
			220/240	50	kgfcm N.m	34.8 3.41	50.4 4.94	64.8 6.35	91.2 8.94	115.2 11.29	132.0 12.94	153.6 15.05	183.7 18.00	173.5 17.00	163.3 16.00	132.7 13.00	-	
		90	110	60	kgfcm N.m	10.4 1.02	15.7 1.53	20.2 1.98	29.2 2.86	36.5 3.58	43.2 4.23	47.5 4.66	61.4 6.02	70.8 6.94	77.8 7.62	96.0 9.41	-	
			220	60	kgfcm N.m	10.4 1.02	15.7 1.53	20.2 1.98	29.2 2.86	36.5 3.58	43.2 4.23	47.5 4.66	61.4 6.02	70.8 6.94	77.8 7.62	96.0 9.41	-	
			220/240	50	kgfcm N.m	10.4 1.02	17.2 1.69	22.2 2.17	32.1 3.14	40.1 3.93	47.5 4.66	52.3 5.12	67.6 6.62	77.9 7.63	85.5 8.38	105.6 10.35	-	
9SDG* -180F2WH	9WHD □ -040	1200	110	60	kgfcm N.m	-	-	-	-	-	-	-	-	244.0 23.91	273.6 26.81	295.0 28.91	270.0 26.46	
			220	60	kgfcm N.m	-	-	-	-	-	-	-	-	-	244.0 23.91	273.6 26.81	295.0 28.91	270.0 26.46
			220/240	50	kgfcm N.m	-	-	-	-	-	-	-	-	-	244.0 23.91	273.6 26.81	295.0 28.91	270.0 26.46
		90	110	60	kgfcm N.m	-	-	-	-	-	-	-	-	-	73.2 7.17	82.1 8.04	97.9 9.60	112.8 11.05
			220	60	kgfcm N.m	-	-	-	-	-	-	-	-	-	73.2 7.17	82.1 8.04	97.9 9.60	112.8 11.05
			220/240	50	kgfcm N.m	-	-	-	-	-	-	-	-	-	73.2 7.17	82.1 8.04	97.9 9.60	112.8 11.05

Motor Model	Gearbox Model	회전속도 r/min	전압 V	주파수 Hz	감속비	15	20	25	30	40	50	60	80	100	120	160	200	225	240
9SDG* -180F2HC	9HC □-◇	1200	110	60	kgfcm N.m	110 10.8	146 14.3	183 17.9	219 21.5	292 28.6	365 35.8	438 42.9	584 57.2	730 71.5	876 85.8	1168 115	1460 143	1643 161	1752 172
			220	60	kgfcm N.m	110 10.8	146 14.3	183 17.9	219 21.5	292 28.6	365 35.8	438 42.9	584 57.2	730 71.5	876 85.8	1168 115	1460 143	1643 161	1752 172
			220/240	50	kgfcm N.m	110 10.8	146 14.3	183 17.9	219 21.5	292 28.6	365 35.8	438 42.9	584 57.2	730 71.5	876 85.8	1168 115	1460 143	1643 161	1752 172
		90	110	60	kgfcm N.m	32.9 3.22	43.8 4.29	54.8 5.37	65.7 6.44	87.6 8.58	110 10.8	131 12.8	175 17.2	219 21.5	263 25.8	350 34.3	438 42.9	493 48.3	526 51.5
			220	60	kgfcm N.m	32.9 3.22	43.8 4.29	54.8 5.37	65.7 6.44	87.6 8.58	110 10.8	131 12.8	175 17.2	219 21.5	263 25.8	350 34.3	438 42.9	493 48.3	526 51.5
			220/240	50	kgfcm N.m	32.9 3.22	43.8 4.29	54.8 5.37	65.7 6.44	87.6 8.58	110 10.8	131 12.8	175 17.2	219 21.5	263 25.8	350 34.3	438 42.9	493 48.3	526 51.5

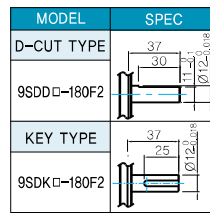
Dimensions

MOTOR ONLY

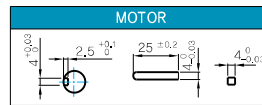
- MOTOR MODEL:
9SD□□-180F2 (POWERFUL FAN)



- MOTOR OUTPUT SHAFT



- KEY SPEC



GEARED MOTOR

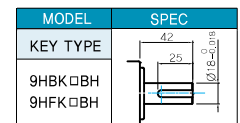
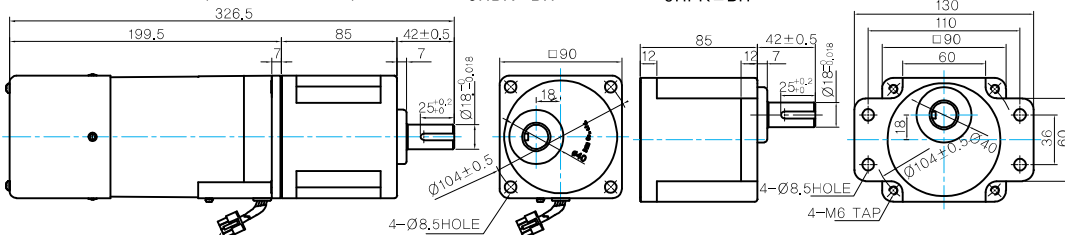
H TYPE GEARBOX

- MOTOR MODEL:
9SDG□-180F2H (POWERFUL FAN)

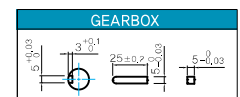
- GEARBOX MODEL:
9HBK□BH

- GEARBOX MODEL:
9HFK□BH

- GEARBOX OUTPUT SHAFT



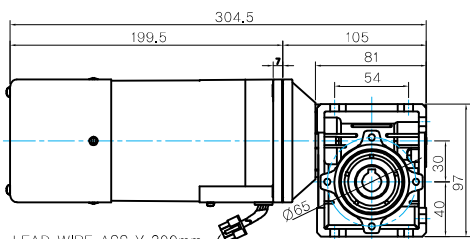
- KEY SPEC



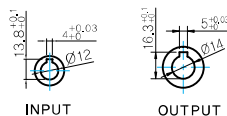
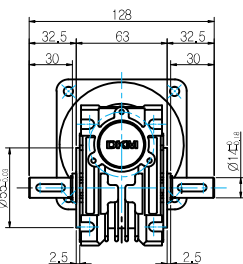
WH TYPE GEARBOX

● MOTOR MODEL:
9SDG□-180F2WH (POWERFUL FAN)

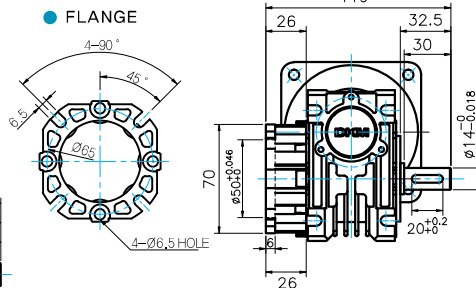
● GEARBOX MODEL:
9WHD□-030



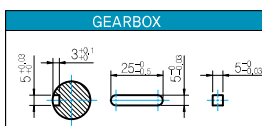
LEAD WIRE ASS Y 300mm
MOTOR UL STYLE NO. 3271 AWG No. 20
T.G UL STYLE NO. 1007 AWG No. 22



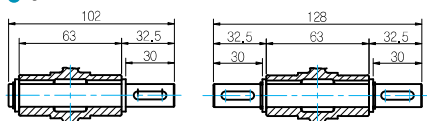
● FLANGE



● KEY SPEC



● SHAFT



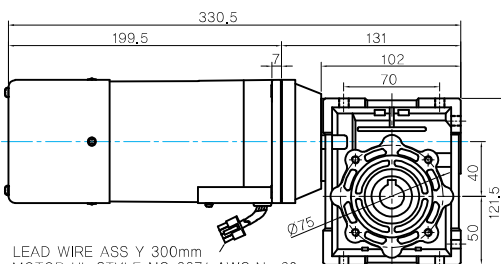
한방향

양방향

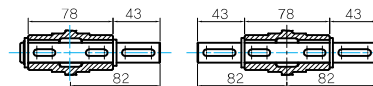
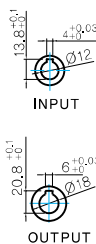
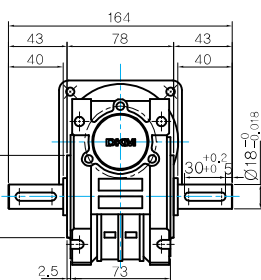
● MOTOR MODEL:
9SDG□-180F2WH (GENERAL FAN)

● GEARBOX MODEL:
9WHD□-040

● SHAFT



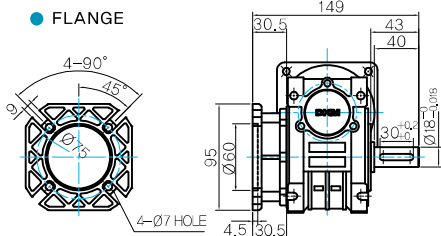
LEAD WIRE ASS Y 300mm
MOTOR UL STYLE NO. 3271 AWG No. 20
T.G UL STYLE NO. 1007 AWG No. 22



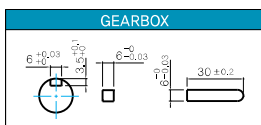
한방향

양방향

● FLANGE



● KEY SPEC



WEIGHT

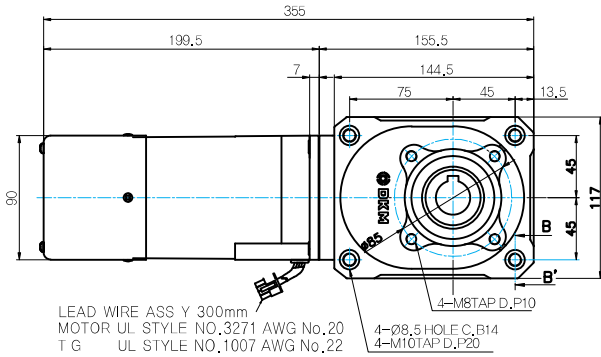
PART	WEIGHT (kg)
MOTOR	4.25
9HB(F)K3BH - 9HB(F)K10BH	1.62
9HB(F)K12.5BH - 9HB(F)K20BH	1.68
9HB(F)K25BH - 9HB(F)K60BH	1.73
9HB(F)K75BH - 9HB(F)K200BH	1.78
9WHD□-030	1.20
9WHD□-040	2.10
9HC15-◇	4.05
9HC20-◇ - 9HC60-◇	4.10
9HC80-◇ - 9HC240-◇	4.75
9XD10□○	0.60

*출력 FLANGE와 SHAFT는 별매입니다.

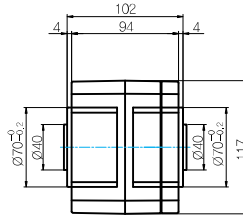
S.C. Induction Motor 180W (□ 90mm)

HC TYPE GEARBOX

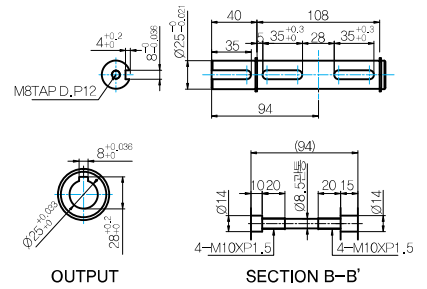
- MOTOR MODEL : 9SDG□-180F2HC-□ (POWERFUL FAN)



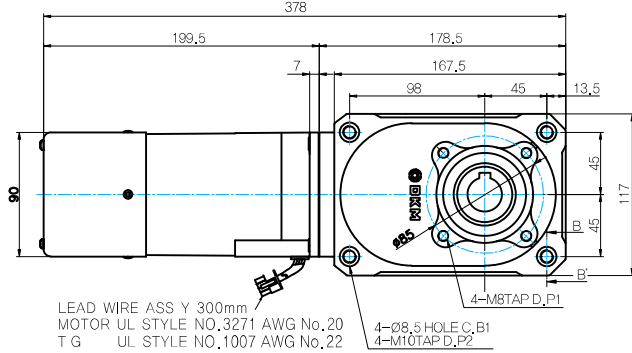
- GEARBOX MODEL : 9HC(15 ~ 60)□



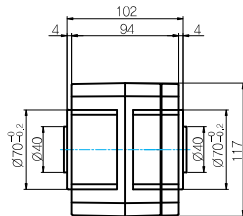
- SHAFT



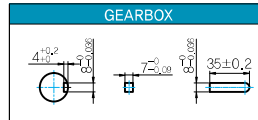
- MOTOR MODEL : 9SDG□-180F2HC-□ (POWERFUL FAN)



- GEARBOX MODEL : 9HC(80 ~ 240)□



- KEY SPEC



WEIGHT

PART	WEIGHT (kg)
MOTOR	4.25
9HB(F)K3BH - 9HB(F)K10BH	1.62
9HB(F)K12.5BH - 9HB(F)K20BH	1.68
9HB(F)K25BH - 9HB(F)K60BH	1.73
9HB(F)K75BH - 9HB(F)K200BH	1.78
9WHD□-030	1.20
9WHD□-040	2.10
9HC15-◇	4.05
9HC20-◇ - 9HC60-◇	4.10
9HC80-◇ - 9HC240-◇	4.75
9XD10□□	0.60

*출력 FLANGE와 SHAFT는 별매향니다.

Motor Images

