

Reversible Motor 40W(□ 90mm)

40W Reversible Motor 40W(□ 90mm)

Motor 사양

Model		Output W	Voltage V	Frequency Hz	Poles	Duty	Starting Torque kgfcm N.m		Rated Load			Capacitor μF / VAC	
9RDG*-40(-T): Gear Type Shaft 9RDD*-40(-T): D-Cut Type Shaft 9RDK*-40(-T): Key Type Shaft	Speed r/min								Current A	Torque kgfcm N.m			
Lead Wire Type	Terminal Box Type												
9RD◇1(A)-40□	9RD◇1(A)-40□-T	40	1φ 110	60	4	30min.	4.00	0.400	1600	1.25	2.44	0.244	16.0 / 250
9RD◇B-40□	9RD◇B-40□-T	40	1φ 100	50	4	30min.	3.55	0.355	1300	0.95	3.00	0.300	16.0 / 250
				60			3.55	0.355	1600	1.15	2.44	0.244	
9RD◇C-40□	9RD◇C-40□-T	40	1φ 200	50	4	30min.	3.70	0.370	1300	0.51	3.00	0.300	4.0 / 450
				60			3.50	0.350	1600	0.53	2.44	0.244	
9RD◇2(D)-40□	9RD◇2(D)-40□-T	40	1φ 220	60	4	30min.	4.00	0.400	1600	0.61	2.44	0.244	4.0 / 450
9RD◇E-40□	9RD◇E-40□-T	40	1φ 220	50	4	30min.	3.20	0.320	1350	0.36	2.89	0.289	3.0 / 450
			1φ 240				3.91	0.391					

1) 모터 모델명 * 자리에는 전압코드가 들어갑니다. 2) 모터 모델명 ◇ 자리에는 모터 출력축 타입명이 들어갑니다. (G: Gear Type / D: D-Cut Type) Gear Type Shaft는 감속기 부착용이며 D-Cut Type Shaft는 모터 단독 사용시의 출력축입니다. 3) 모터 출력축 타입이 Gear Type일 경우, □ 안에는 부착되는 감속기의 모델 타입명이 들어갑니다. 4) 전압코드 A, B, C, D, E는 TP(Thermal Protector) 부착 사양입니다.

감속기 부착 시 최대허용토크

60Hz

Motor Model	Gearbox Model	감속비	2	3	3.6	5	6	7.5	9	10	12.5	15	18	20	25	30	36	40	50	60	75	90	100
9RDG*-40G	9GBK□ BMH	r/min	900	600	500	360	300	240	200	180	144	120	100	90	72	60	50	45	36	30	24	20	18
		kgfcm N.m	3.9 0.39	5.9 0.58	7.1 0.70	9.9 0.97	11.8 1.16	14.8 1.45	17.8 1.74	19.7 1.93	24.7 2.42	29.6 2.90	35.5 3.48	35.6 3.48	44.4 4.35	53.3 5.23	64.0 6.27	71.1 6.97	80.4 7.87	96.4 9.45	100.0 9.80	100.0 9.80	100.0 9.80

Motor Model	Gearbox Model	감속비	120	150	180	200	Motor Model	Gearbox Model	감속비	10	12	15	18	25	30	36	50	60	
9RDG*-40G	9GBK□ BMH	r/min	15	12	10	9	9RDG*-40W	9WD□ BL/ □ BR/□ BRL	r/min	180	150	120	100	72	60	50	36	30	24
		kgfcm N.m	100.0 9.80	100.0 9.80	100.0 9.80	100.0 9.80			20.0 1.96	23.4 2.29	28.1 2.76	32.4 3.18	42.6 4.18	48.2 4.72	56.1 5.50	73.1 7.16	80.4 7.87		

Motor Model	Gearbox Model	감속비	2	3	3.6	5	6	7.5	9	10	12.5	15	18	20	25	30	36	40	50	60	75
9RDG*-40P	9PBK□ BH 9PFK□ BH	r/min	900	600	500	360	300	240	200	180	144	120	100	90	72	60	50	45	36	30	24
		kgfcm N.m	3.9 0.39	5.9 0.58	7.1 0.70	9.9 0.97	11.8 1.16	14.8 1.45	17.8 1.74	19.7 1.93	22.2 2.18	26.7 2.61	32.0 3.14	35.6 3.48	40.2 3.94	48.2 4.72	57.9 5.67	64.3 6.30	80.4 7.87	96.4 9.45	107.7 10.56

Motor Model	Gearbox Model	감속비	90	100	120	150	180	200
9RDG*-40P	9PBK□ BH 9PFK□ BH	r/min	20	18	15	12	10	9
		kgfcm N.m	129.3 12.67	143.7 14.08	172.4 16.90	200.0 19.60	200.0 19.60	200.0 19.60

50Hz

Motor Model	Gearbox Model	감속비	2	3	3.6	5	6	7.5	9	10	12.5	15	18	20	25	30	36	40	50	60	75	90	100
9RDG*-40G	9GBK□ BMH	r/min	750	500	417	300	250	200	167	150	120	100	83	75	60	50	42	38	30	25	20	17	15
		kgfcm N.m	4.7 0.46	7.0 0.69	8.4 0.82	11.7 1.15	14.0 1.37	17.5 1.72	21.0 2.06	23.4 2.29	29.2 2.86	35.1 3.44	42.1 4.12	42.1 4.13	52.7 5.16	63.2 6.19	75.8 7.43	84.3 8.26	95.2 9.33	100.0 9.80	100.0 9.80	100.0 9.80	

Motor Model	Gearbox Model	감속비	120	150	180	200	Motor Model	Gearbox Model	감속비	10	12	15	18	25	30	36	50	60	
9RDG*-40G	9GBK□ BMH	r/min	13.0	10.0	8.0	7	9RDG*-40W	9WD□ BL/ □ BR/□ BRL	r/min	150	125	100	83	60	50	42	30	25	20
		kgfcm N.m	100.0 9.80	100.0 9.80	100.0 9.80	100.0 9.80			23.7 2.32	27.7 2.72	33.3 3.27	38.4 3.77	50.5 4.95	57.1 5.60	66.5 6.52	86.6 8.48	95.2 9.33		

Motor Model	Gearbox Model	감속비	2	3	3.6	5	6	7.5	9	10	12.5	15	18	20	25	30	36	40	50	60	75
9RDG*-40P	9PBK□ BH 9PFK□ BH	r/min	750	500	417	300	250	200	167	150	120	100	83	75	60	50	42	37.5	30	25	20
		kgfcm N.m	4.7 0.46	7.0 0.69	8.4 0.82	11.7 1.15	14.0 1.37	17.5 1.72	21.0 2.06	23.4 2.29	26.3 2.58	31.6 3.10	37.9 3.72	42.1 4.13	47.6 4.67	57.1 5.60	68.6 6.72	76.2 7.47	95.2 9.33	114.3 11.20	127.7 12.51

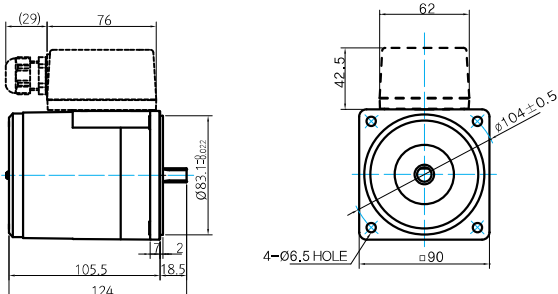
Motor Model	Gearbox Model	감속비	90	100	120	150	180	200
9RDG*-40P	9PBK□ BH 9PFK□ BH	r/min	17	15	12.5	10	8	7.5
		kgfcm N.m	153.2 15.02	170.3 16.69	200.0 19.60	200.0 19.60	200.0 19.60	200.0 19.60

1) 모터 모델명 * 자리에는 전압코드가 들어갑니다. 2) 감속기 모델명 □ 안에는 감속비가 들어갑니다.
3) 위의 표에서 색칠된 범위의 감속비를 선택했을 때 감속기의 출력축은 모터의 출력축과 같은 방향으로 회전합니다.
흰색 바탕 범위의 감속비에서는 감속기 출력축은 모터 출력축의 회전방향과 반대방향으로 회전합니다.
4) 회전속도(r/min)는 모터의 동기회전속도(50Hz:1500r/min, 60Hz:1800r/min)를 감속비로 나누어 계산합니다.
실제 회전속도는 부하의 크기에 따라 표시보다 2~20% 정도 느립니다.

Dimensions

MOTOR ONLY

- MOTOR MODEL: 9RDD□-40(-T) (NO FAN)

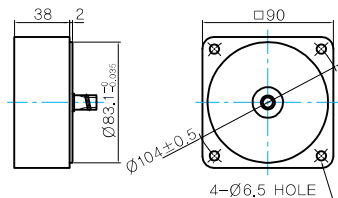


MOTOR OUTPUT SHAFT

MODEL	SPEC
D-CUT TYPE	
KEY TYPE	

중간감속기

- MODEL: 9XD10□□

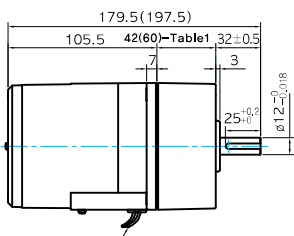


GEARED MOTOR

G TYPE GEARBOX

- MOTOR MODEL: 9RDG□-40G (NO FAN)

- GEARBOX MODEL: 9GBK□BMH

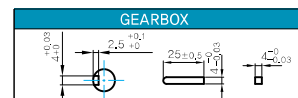


LEAD WIRE 300mm
UL STYLE NO,3271 AWG NO,20

GEARBOX OUTPUT SHAFT

MODEL	SPEC
KEY TYPE	

KEY SPEC



42(60)-Table1

SIZE(mm)	GEAR RATIO
42	9GBK2BMH - 9GBK18BMH
60	9GBK20BMH - 9GBK200BMH

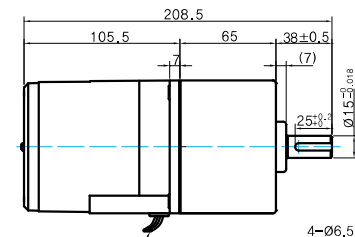
P TYPE GEARBOX

- MOTOR MODEL: 9RDG□-40P (NO FAN)

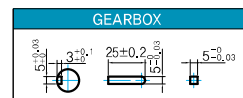
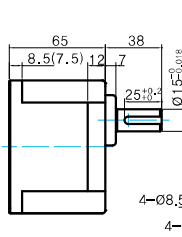
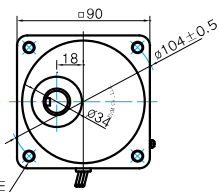
- GEARBOX MODEL: 9PBK□BH

- GEARBOX MODEL: 9PFK□BH

KEY SPEC



LEAD WIRE 300mm
UL STYLE NO,3271 AWG NO,20



GEARBOX OUTPUT SHAFT

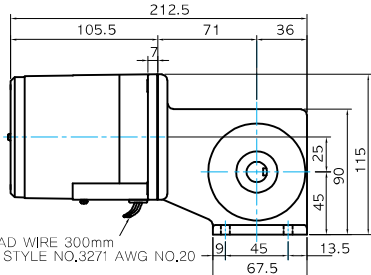
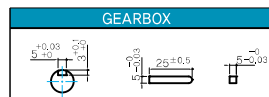
MODEL	SPEC
KEY TYPE	

W TYPE GEARBOX

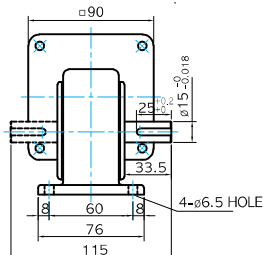
- MOTOR MODEL: 9RDG□-40W (NO FAN)

- GEARBOX MODEL: 9WD□BL/BR/BRL

KEY SPEC



LEAD WIRE 300mm
UL STYLE NO,3271 AWG NO,20



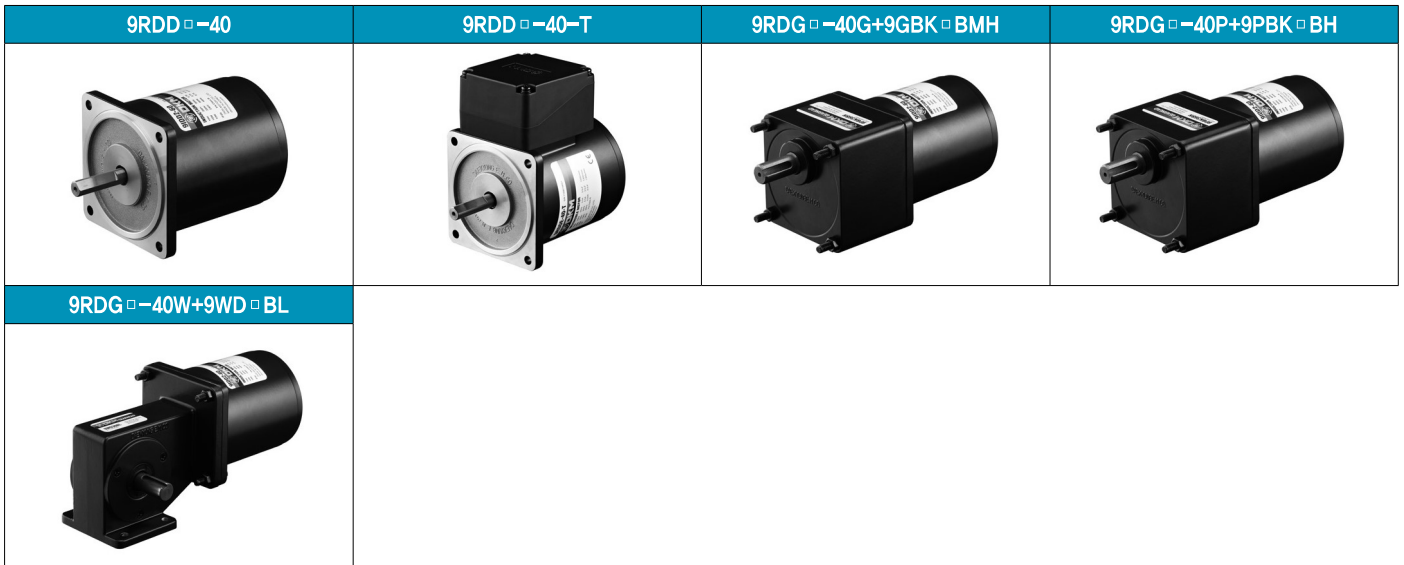
WEIGHT

PART	WEIGHT(kg)	
MOTOR	2.45	
GEAR BOX	9GBK2BMH - 9GBK18BMH	0.78
	9GBK20BMH - 9GBK40BMH	1.10
	9GBK50BMH - 9GBK200BMH	1.20
	9PB(F)K2BH - 9PB(F)K10BH	1.28
	9PB(F)K12.5BH - 9PB(F)K20BH	1.30
	9PB(F)K25BH - 9PB(F)K60BH	1.45
	9PB(F)K75BH - 9PB(F)K200BH	1.47
	9WD□BL/BR/BRL	1.00
	9XD10□□	0.60

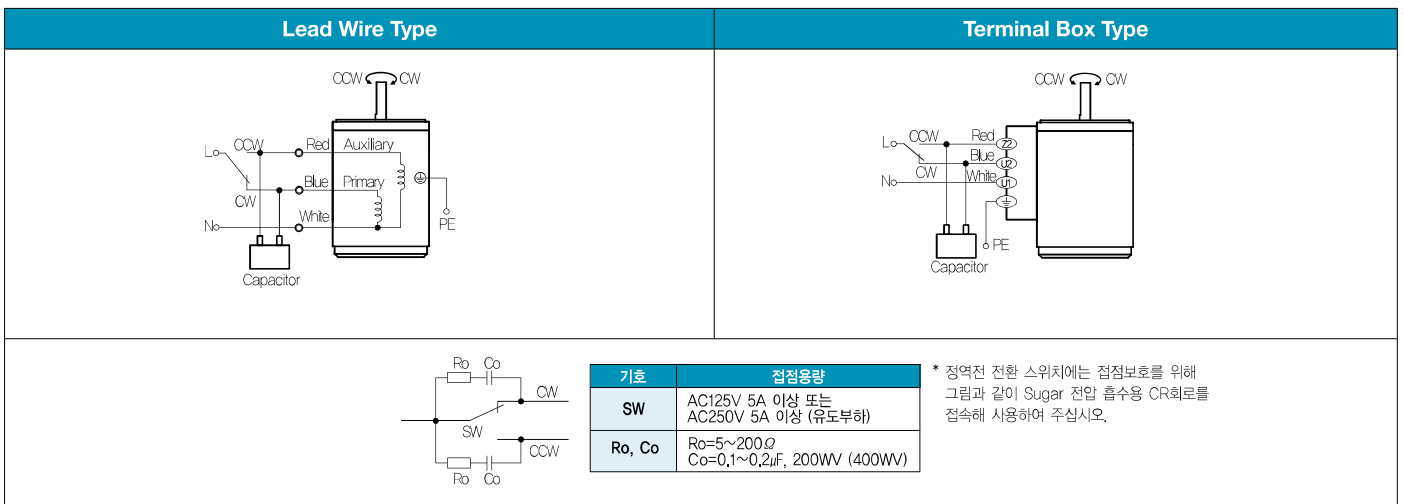
*출력 FLANGE와 SHAFT는 별매입니다.

Reversible Motor 40W(□ 90mm)

Motor Images



결선도



- 1) 회전방향은 모터 축 측에서 본 방향을 나타냅니다.
- 2) CW는 시계방향, CCW는 반시계방향입니다.
- 3) 모터 운전중에 회전방향 전환이 가능합니다. 스위치를 CW 쪽으로 하면 모터는 시계방향으로, CCW 쪽으로 하면 반시계방향으로 회전합니다.